



RAPID-TORC

BIG NUTS - BIG TOOLS

WWW.RAPIDTORC.COM



RAPID RUNNER
USER MANUAL

306 Av Louise B-1050 Brussels-Belgium
Tel: +32-2/358.19.33 - Fax: +32-2/358.50.66

This manual contains important setup, maintenance, and safety information. Make sure you read it thoroughly **before** using your AIR TITE™ Pneumatic Torque Wrench.

Contents:

1. General
2. Safety
3. R R Tool Setup
4. Regulator Cage Setup
5. Planetary Drive Assembly Parts
6. Stage 1 Planetary Drive Parts
7. Stage 2 Planetary Drive Parts
8. Final Planetary Drive Parts
9. Air Motor Assembly Parts
10. Reaction Arms
11. Warranty
12. Contact Information

EXTREME *Torque Machines*

POWER

*Equal power in forward & reverse
Ideal for backing off stubborn bolts
Perfectly suited for opening & closing valves or running taps*

ACCURACY

*Individually calibrated
Calibration charts ship with tool
Accurate to better than +/- 5%
Repeatable to +/- 1.5%*

SAFETY

*No vibration
Reduced noise level
Virtually eliminates MSD & strain injuries*

SAFETY

RAPID RUNNER tools use pressurized air to develop very large forces to tighten and loosen threaded fasteners.

For your safety and that of others, **WARNING LABELS** and **ATTENTION LABELS** are prominently attached to the carrying cages, reaction accessories and tools.

MAKE SURE YOU OBSERVE THE DIRECTIONS ON THE WARNING LABELS AT ALL TIMES.

RR tools have been designed with safety in mind however, as with all tools you **MUST** observe all general safety practices, and specifically the following:

- *Before using new tool, get familiar with all list accessories and how they work.*
- **ALWAYS** wear safety goggles, safety glasses and helmet when the tool is in operation.
- *Make sure the reaction arm is in contact with a solid reaction point before you operate the tool.*
- *Keep your body parts clear of the reaction arm and the reaction point.*
- *Set your air pressure while the tool is running.*
- *Refer to the enclosed torque chart to set the correct air pressure regulator setting for a required torque.*
- **NEVER exceed the maximum air pressure shown on the torque chart.**
- **ALWAYS** use the regulator and oiler that is supplied. Failure to do this voids the warranty and can place you in danger.
- *Be sure to use a minimum 1/2" airline to the cage assembly as this will allow for adequate air flow.*
- *Make sure the reaction arm snap ring is installed securely to hold the reaction arm in place.*

RAPID RUNNER TOOLS ARE SAFE AND RELIABLE, HOWEVER, NOT FOLLOWING PRECAUTIONS AND INSTRUCTIONS OUT-LINED HERE CAN RESULT IN INJURY TO YOU AND YOUR FELLOW WORKERS.

RAPID-TORC IS NOT RESPONSIBLE FOR ANY SUCH INJURY

Snap Ring
part #10038

Square Drive Shaft



Standard
Reaction Arm
part #10043



Forward/Reverse
Lever

Operating
Trigger

Exhaust Port

Quick Connect Fitting
part #10313

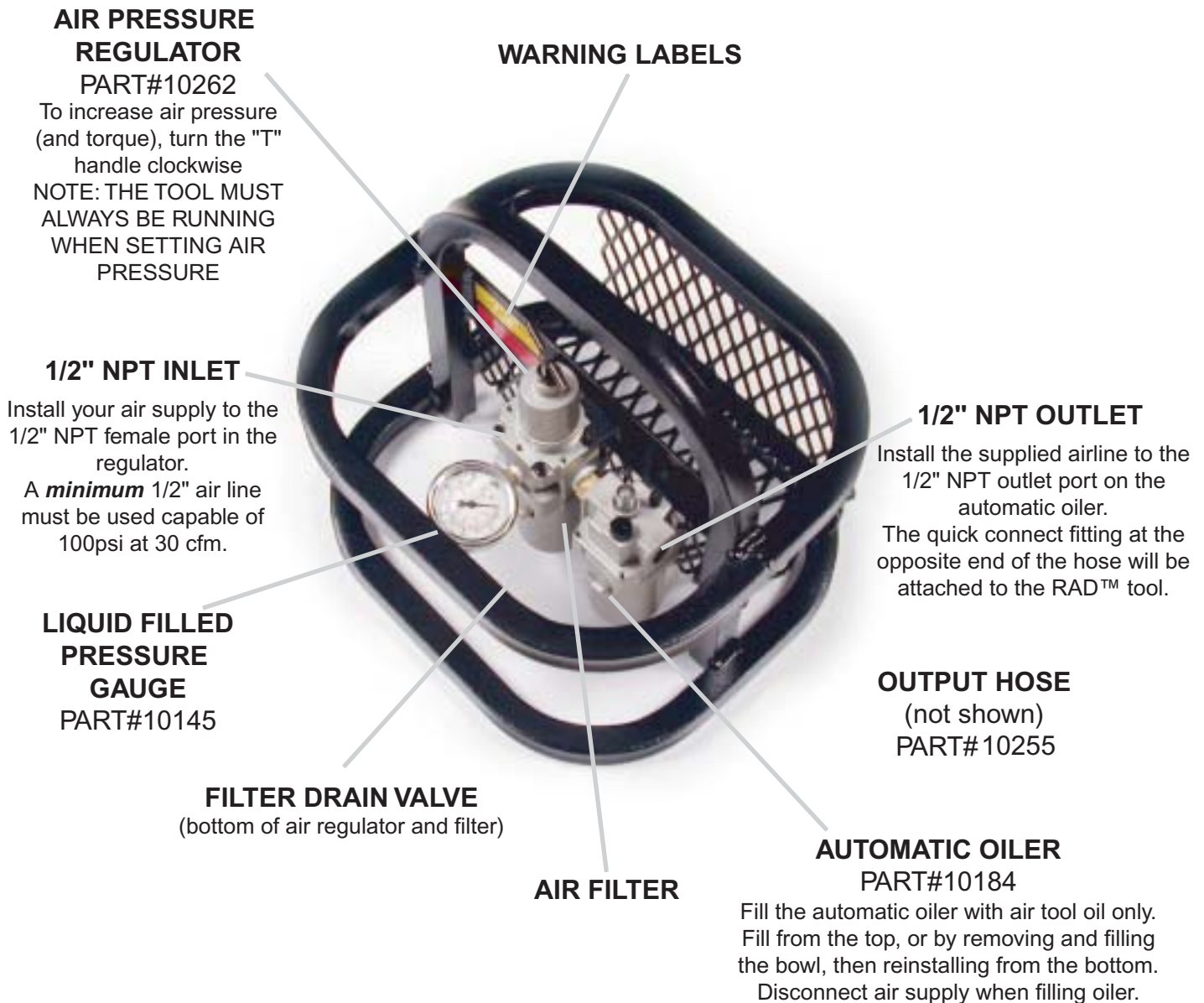
PATENT PENDING

RAPID-TORC SA - RR PNEUMATIC TORQUE WRENCH

REGULATOR CAGE SETUP

COMPLETE CAGE ASSEMBLY

PART#10254

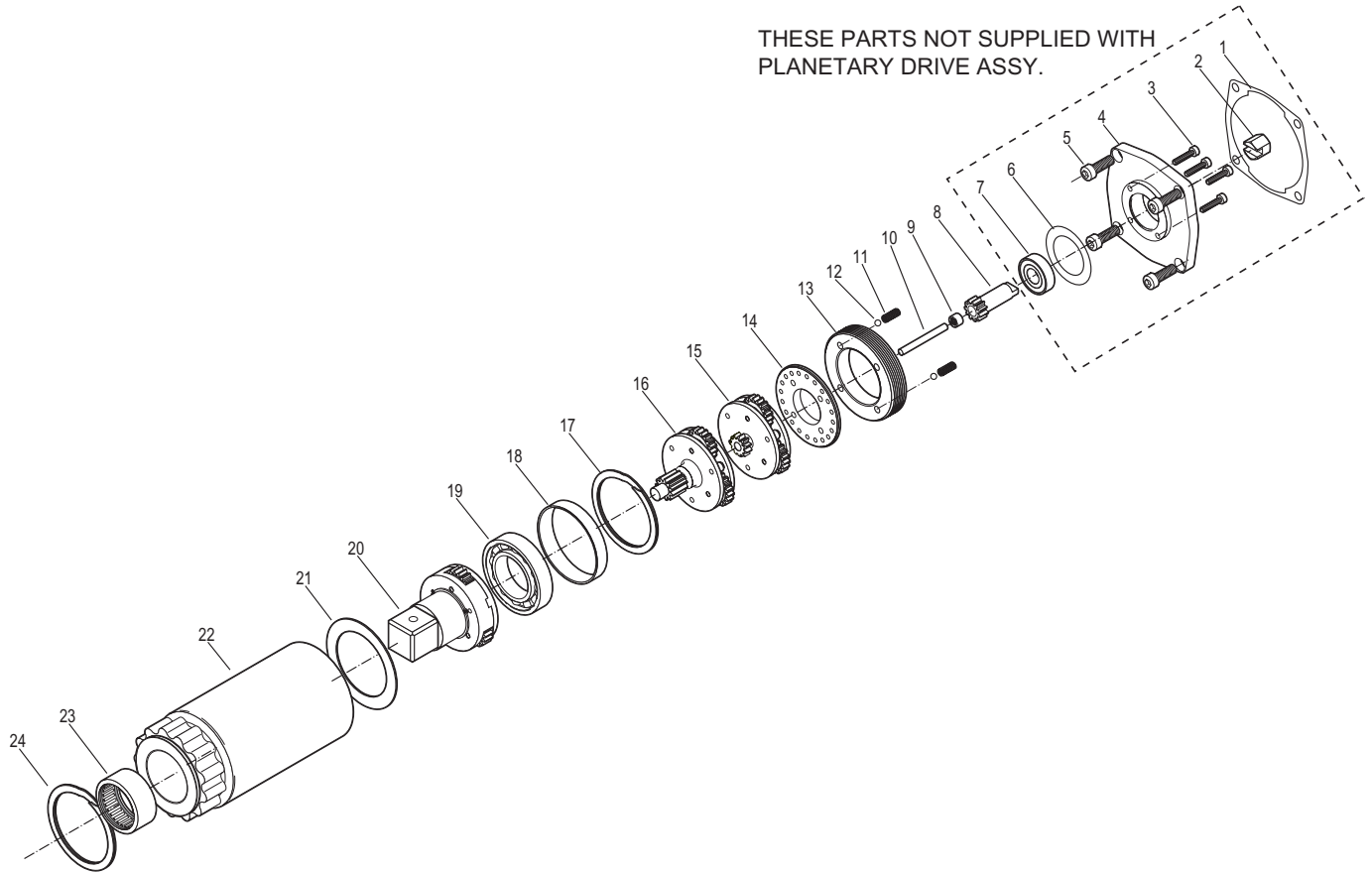


NOTE: AIR SUPPLY MUST BE A *MINIMUM* OF 100psi @ 30cfm

PATENT PENDING

RAPID RUNNER PLANETARY DRIVE ASSEMBLY PARTS

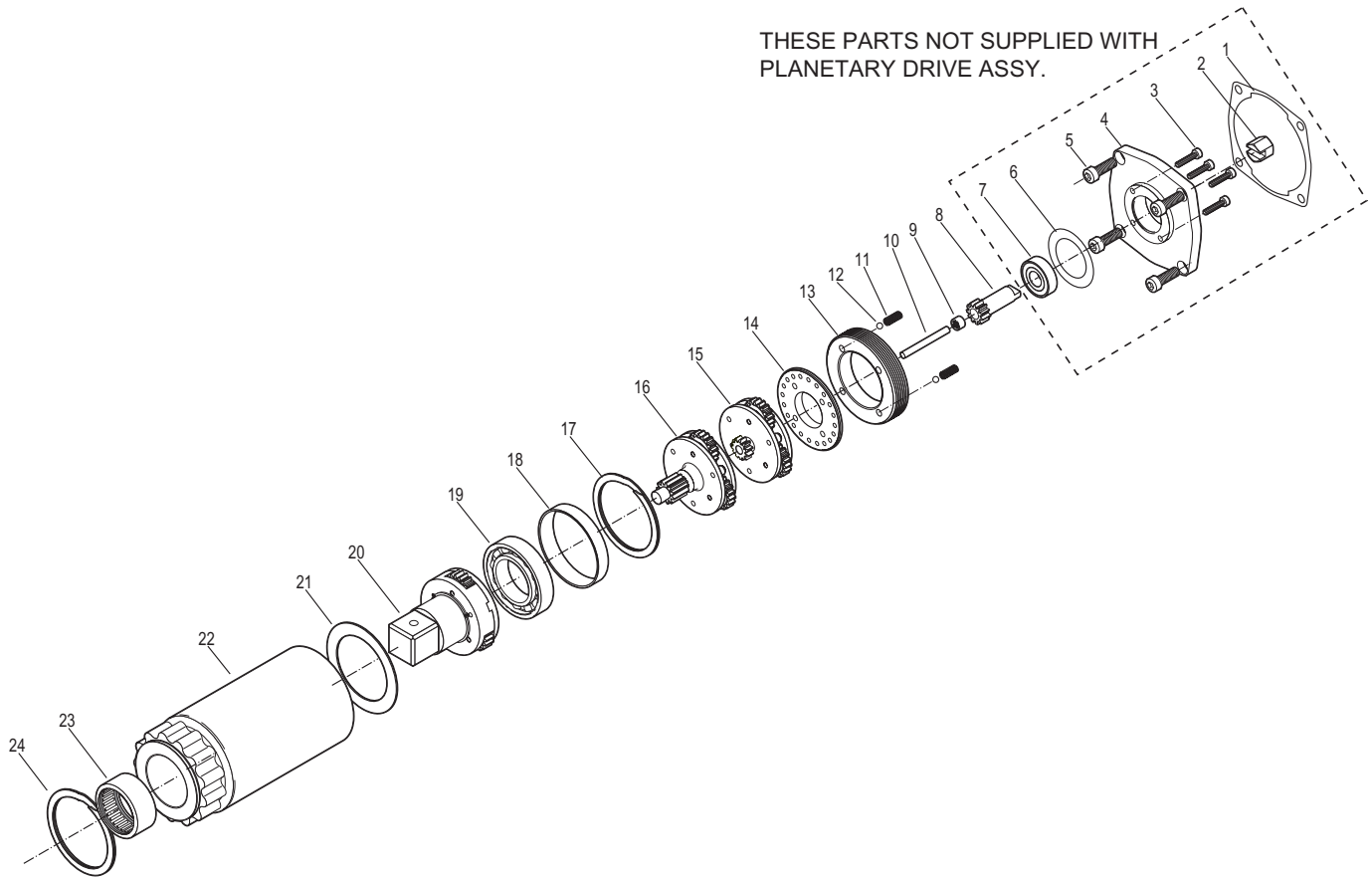
ASSEMBLY PART #10046



ITEM	DESCRIPTION	QTY	PART NUM
1	Air Motor Gasket	1	T89000P500
2	Hex Primary Drive	1	10174
3	Gear Box Fastener	4	10116
4	Adapter Plate	1	10073
5	Air Motor Fastener	4	10126
6	Hardened Washer	1	10350
7	Bearing	1	10085
8	Primary Sun Gear	1	10239
9	Bearing	1	10078
10	Alignment Pin	1	10225
11	Index Spring	2	10302
12	Index Ball	2	10075

ITEM	DESCRIPTION	QTY	PART NUM
13	Threaded Ring	1	10338
14	Index Plate	1	10179
15	1st Stage Assy	1	10265
16	2nd Stage Assy	1	10268
17	Snap Ring Internal	1	10013
18	Bearing Support	1	10096
19	Bearing	1	10083
20	Final Stage Assy	1	10272
21	Washer (Hardened)	1	10349
22	Annulus	1	10058
23	Drive Bearing	1	10084
24	External Snap Ring	1	10038

PATENT PENDING

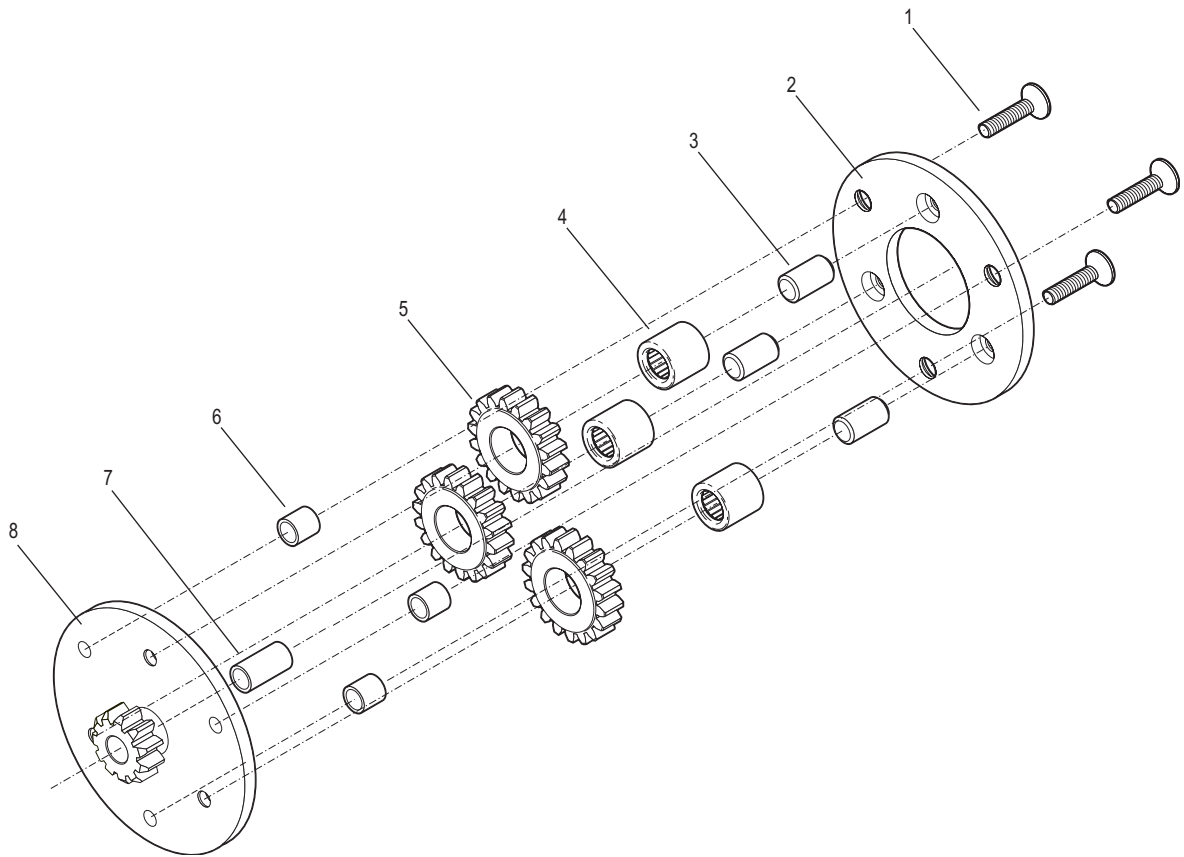


ITEM	DESCRIPTION	QTY	PART NUM
1	Air Motor Gasket	1	T89000P500
2	Hex Primary Drive	1	10174
3	Gear Box Fastener	4	10116
4	Adapter Plate	1	10073
5	Air Motor Fastener	4	10126
6	Hardened Washer	1	10350
7	Bearing	1	10085
8	Primary Sun Gear	1	10239
9	Bearing	1	10078
10	Alignment Pin	1	10225
11	Index Spring	2	10302
12	Index Ball	2	10075

ITEM	DESCRIPTION	QTY	PART NUM
13	Threaded Ring	1	10338
14	Index Plate	1	10179
15	1st Stage Assy	1	10265
16	2nd Stage Assy	1	10268
17	Snap Ring Internal	1	10013
18	Bearing Support	1	10096
19	Bearing	1	10083
20	Final Stage Assy	1	10272
21	Washer (Hardened)	1	10349
22	Annulus	1	10058
23	Drive Bearing	1	10084
24	External Snap Ring	1	10038

PATENT PENDING

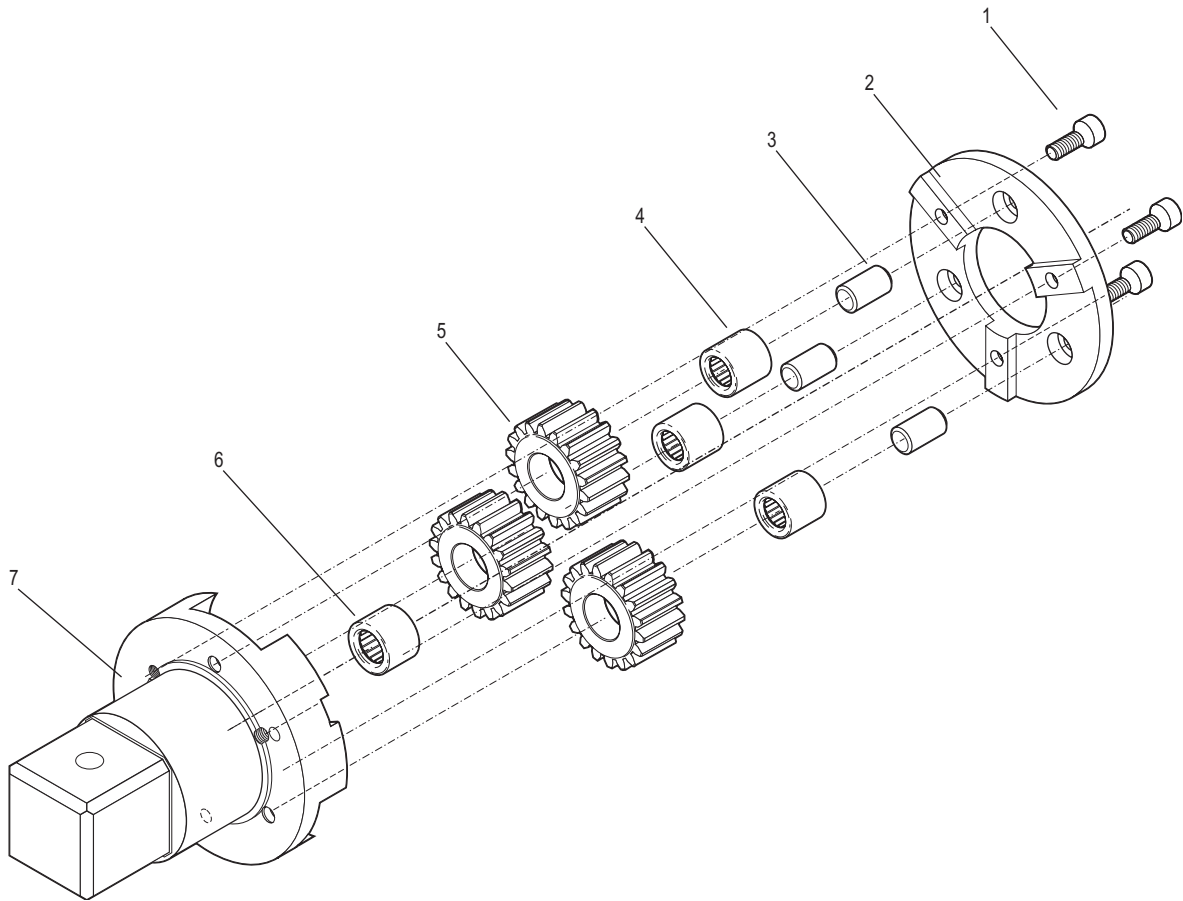
PART #10268 - SECOND STAGE ASSEMBLY PARTS



ITEM	DESCRIPTION	QTY	PART NUM
1	Fastener	3	10115
2	Top Plate	1	10321
3	Bearing Pin	3	10223
4	Bearing	3	10079
5	Planet Gear	3	10157
6	Spacer	3	10299
7	Bushing	1	10100
8	Output Plate	1	10190

PATENT PENDING

PART #10272 - FINAL STAGE ASSEMBLY PARTS



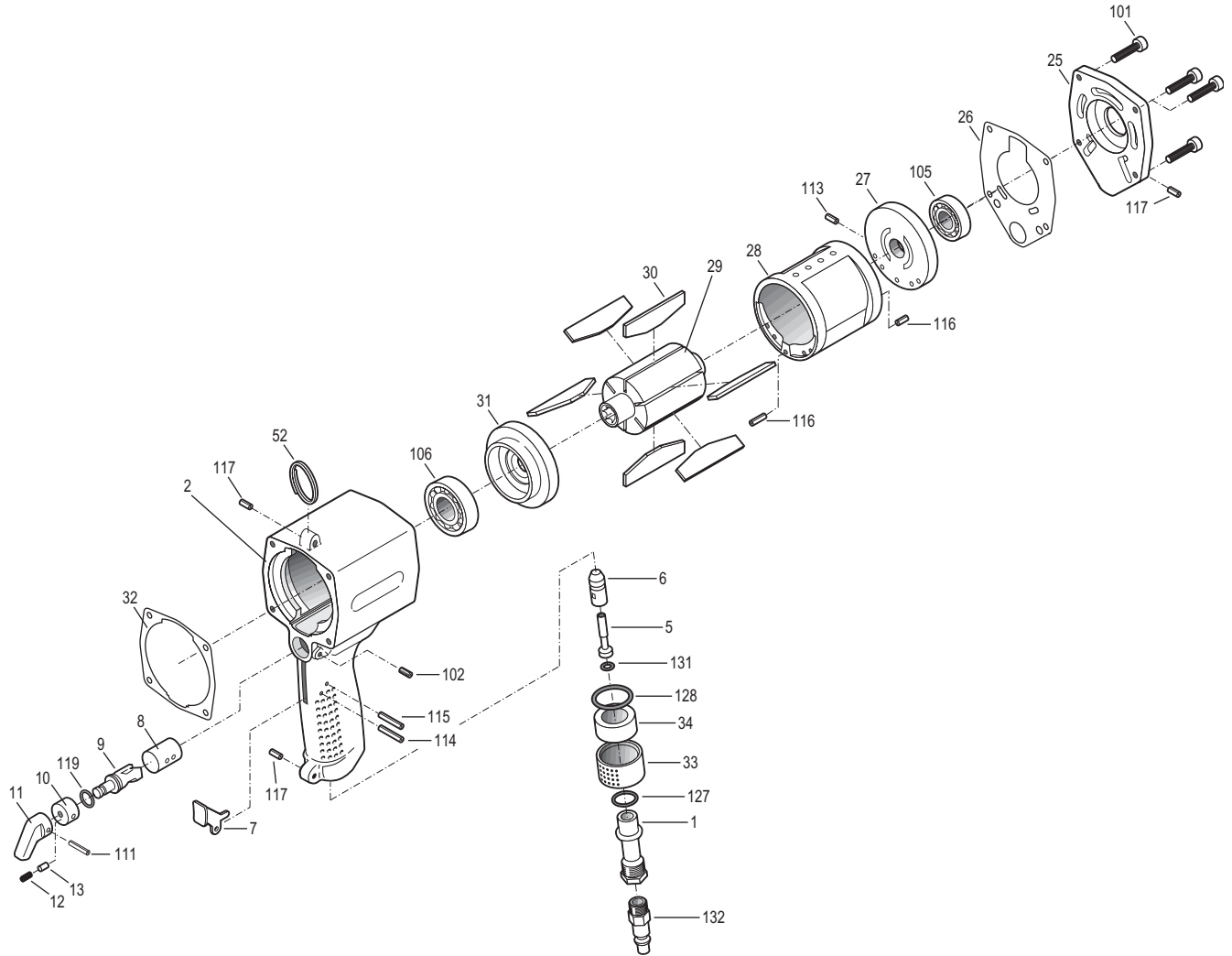
ITEM	DESCRIPTION	QTY	PART NUM
1	Fastener	3	10114
2	Top Plate	1	10324
3	Bearing Pin	3	10230
4	Bearing	3	10081
5	Planet Gear	3	10156
6	Bearing	1	10080
7	Output Drive Plate	1	10194

PATENT PENDING

RR 2100

AIR MOTOR ASSEMBLY PARTS

AIR MOTOR ASSEMBLY PART # 10253

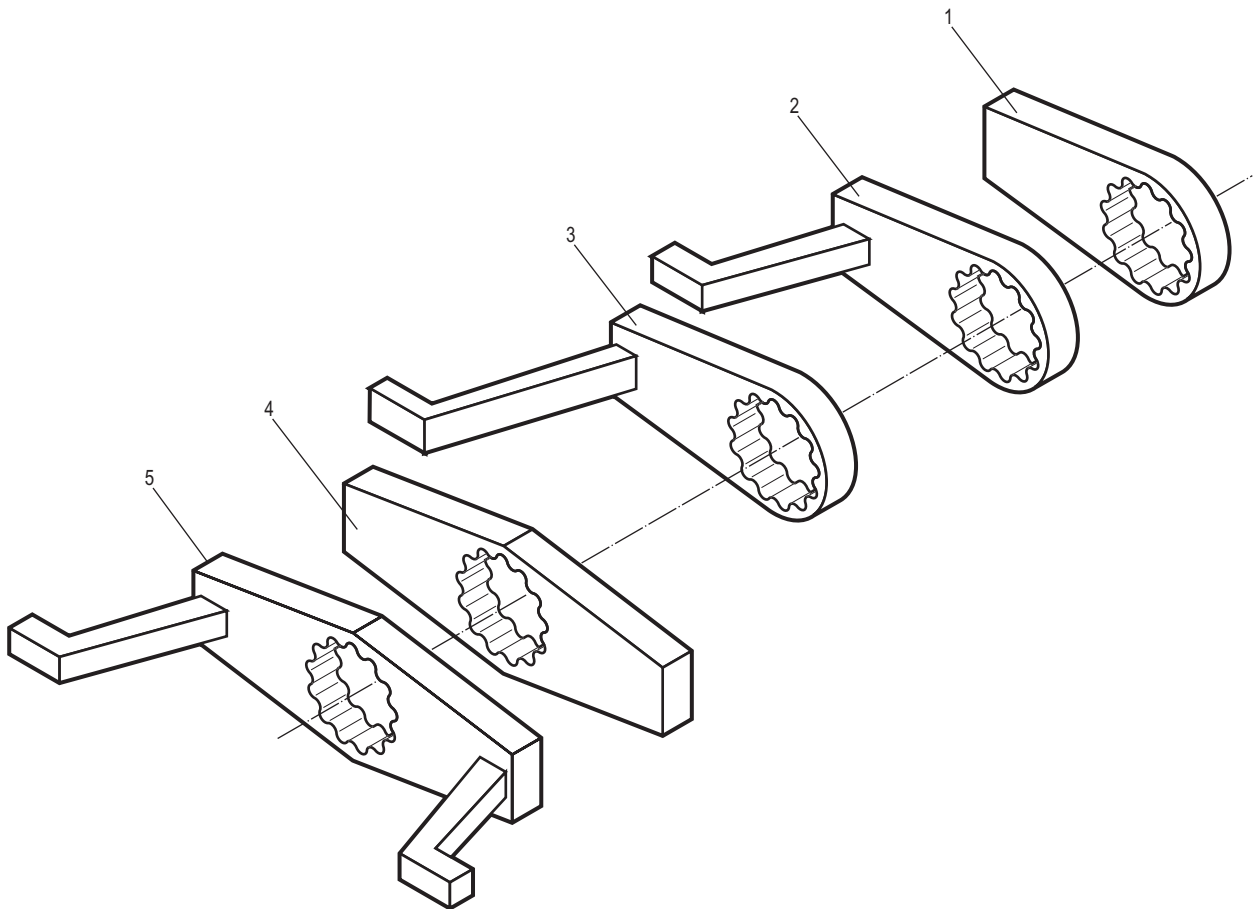


ITEM	DESCRIPTION	QTY	PART NUM
1	Inlet Bushing	1	T54000H020
2	Handle	1	T89000H550
5	Throttle Valve	1	T54000H300
6	Throttle Bushing	1	T54000H270
7	Lever	1	T54000H880
8	Reverse Bushing	1	T54000H810
9	Reverse Valve	1	T54000H800
10	Reverse Washer	1	T51010H860
11	Reverse Lever	1	T51010H820
12	Spring	1	T51010B800
13	Reverse Stop Pin	1	T51010H830
25	Handle Cap	1	T89000H560
26	Top Seal Packing	1	T89000P300
27	Top Plate	1	T89000R300
28	Cylinder	1	I10000R200
29	Rotor	1	T89000R720
30	Vane	6	T89000R500
31	Bottom Plate	1	T89000R510
32	Bottom Seal Packing	1	T89000P500

ITEM	DESCRIPTION	QTY	PART NUM
33	Exhaust Cover	1	T54000E030
34	Muffle	1	T54000E700
52	Hanger	1	T51010Z560
101	Hex. Socket Cap Screw	4	1050106020
102	Hex. Socket Set Screw	1	1602010408
105	Ball Bearing	1	2010006003
106	Ball Bearing	1	2010000008
111	Spring Pin (Reverse Lever)	1	3030025160
113	Spring Pin (Top Plate)	1	3030030080
114	Spring Pin (Lever)	1	3030030160
115	Spring Pin (Handle)	1	3030030250
116	Spring Pin (Cylinder)	2	3030040120
117	Spring Pin (Handle)	3	3030045100
119	"O" Ring	1	4150100100
127	"O" Ring	1	4150100180
128	"O" Ring	1	4150100260
131	"O" Ring	1	4151200060
132	Nipple	1	10313

PATENT PENDING

RR 2100 REACTION ARMS



ITEM	DESCRIPTION	QTY	PART NUM.
1	Reaction Blank	1	10044
2	Standard Reaction Arm	1	10043
3	Deep Socket Reaction Arm	1	10458
4	Reaction Blank Double Ended	1	10045
5	Double Ended Reaction Arm	1	10459

PATENT PENDING

WARRANTY

RAPID RUNNER TOOL WARRANTY

RAPID RUNNER tools come with a one (1) year conditional warranty.

RAPID-TORC warranty RR pneumatic torque wrenches against manufacturer and material defects, as well as workmanship.

Parts will be replaced free of charge if found to be defective and under warranty. RAPID-TORC will **NOT** warranty any tool or part that shows abuse, misuse and/or neglect resulting from the user's behalf.

RAPID-TORC tools are to be used in the proper manner outlined in this manual. Failure to adhere to manual specifications voids the warranty.

RAPID-TORC will use their best discretion when deciding if a part or tool will be replaced or repaired under warranty.

Not covered under the warranty are reaction blanks, reaction arms, 3/4" drives, and 1" drives.

PATENT PENDING

CONTACTS

For sales, parts and all customer support, contact RAPID-TORC SA:

RAPID-TORC SA

306 Av. Louise,
B-1050 Bruxelles

Tel: +32 (2) 358.19.33
Fax: +32 (2) 358.50.66
E-mail: sales@rapidtorc.com
www.rapidtorc.com

For service, send your RR tool to:

RAPID-TORC

78 JB Charlierlaan
B-1560 Hoeilaart

OR

Your Local RAPID-TORC Representative