



RAPID-TORC





With over **20 years experience**, we have seen all types of bolting applications. All over the world we have dealt with industries ranging from Mines to Refineries and everything between. We have acquired priceless experience

under all kinds of circumstances. This experience gives us the necessary **knowledge** to solve your bolting problems and needs.

Complete customer satisfaction is our focus. We place an emphasis on the services you need to get your bolting jobs and problems met. The results and **quality** you are waiting for can be found with Rapid-Torc.

Remember your **satisfaction** is our primary objective

Roger Dischert
Rapid-Torc Co-Founder



RT Series - Square Drive Tools
Hydraulic Torque Wrenches

RTX Series - Hex Drive Tools
Hydraulic Torque Wrenches

Impact Sockets
For Hydraulic Torque Wrenches

Hydraulic Pumps Units
For Hydraulic Torque Wrenches

Induction Bolt Heating

Hydraulic Bolt Tensioners

Air & Electric Torque Wrenches

Rentals & Services

Calibration

Accessories

Spare parts RT & RTX Series



RT Series, Square Drive Tools



For all applications where torque is source of safety, Rapid-Torc RT Series will allow you to access even where you have the most severe accessibility problems.



RTX Series, Hex Drive Tools



The Rapid-Torc RTX Hexagonal Ratchet Link is unique. There is no tool like RTX, offering flexibility and technical advantages.

The RTX will fit your torquing needs!





Made for all heavy duty applications

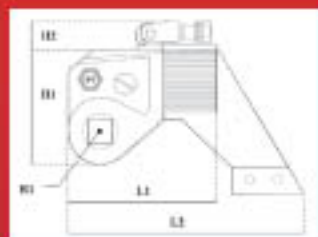
Technical Informations

RAPID-TORC, Square Drive Tools

Technical Features

- Splined Square Drive
- One Way Ratchet system
- Fast double effect operation
- 360° Adjustable Reaction Arm
- Ultra - Light AQR51 Alu Housing
- Multi axis Swivel 360°x180°
- Certified Accuracy at +/- 3%
- Reaction Pawl system
- Hand-free Operation
- Disengagement levers
- Anti-Side load system
- Shroud with energy absorption system
- Flexible drive system
- Minimum Radius

Models		RT-6	RT-1	RT-3	RT-6	RT-8	RT-10	RT-20	RT-26	RT-60
Square Drive		1/2"	3/4"	1"	1 1/2"	1 1/2"	1 1/2"	2 1/2"	2 1/2"	2 1/2"
Min Torque	Fl-lbs	55	200	480	835	1200	1755	2960	3960	7875
	Nm	75	271	651	1132	1627	2379	4013	5368	10675
Max Torque	Fl-lbs	397	1340	3230	5590	8000	11520	19760	26890	52500
	Nm	538	1817	4379	7578	10845	15617	26787	36096	71169
Weight	Lbs	0,8	3,8	7,8	15	23	26,8	36	62	96
	Kg	0,4	1,9	3,9	7,5	11,5	13,4	18	31	48
L1	Inch	3,15	4,68	6,04	7,21	7,85	9	10,2	12	15,2
	mm	81	120	155	185	202	232	259	310	390
L2	Inch	4,87	7,13	9,24	11,23	12,49	13,9	16,55	18,4	23,9
	mm	125	183	237	288	321	357	420	473	615
H1	Inch	2,35	3,52	4,68	5,63	6,42	7,2	8,5	9,1	11,4
	mm	60,5	90,5	120	144,5	164,61	186	216	234	294
H2	Inch	3,62	4,75	6,08	7,05	8,4	9,3	9,9	11	13,4
	mm	93	122	156	181	213,36	239	251	282	344
R1	Inch	0,52	0,9	1,28	1,44	1,62	1,87	2,17	2,37	30,8
	mm	13,5	23	33	37	41	48	55,11	61	79
W1	Inch	1,3	1,95	2,59	3,12	3,48	3,9	4,7	5,2	6,5
	mm	33,5	50	66,5	80	88	100	119	134	167
W2	Inch	1,97	2,76	3,72	4,9	4,95	5,5	6,7	7,4	8,9
	mm	50,5	71	95,5	126	126	142,5	170	191	228

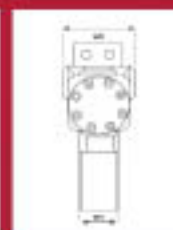


RAPID-TORC, Hex Drive Tools

Technical Features

- X-treme Low Profile for confined areas
- Hex Ratchet Links up to 6 1/2"
- Never lock drive pawl
- Maxi-torque for each ratchet
- Ultra-Light AQR51 Alu Power-head
- One Way Ratchet System
- Hand Free Operation
- Double effect power-head
- Certified Accuracy at +/- 3%
- 360°x180° Rapid-swivel
- Bronze bearing sleeve
- In line reaction system
- Full automatic RL engagement

Models		RTX-2	RTX-4	RTX-8	RTX-14	RTX-30
Ratchet Link Hex Size	Inch	3/4"-2 3/4"	1"-3 1/8"	1 5/8"-4 1/8"	2 1/2"-4 3/4"	3 1/2"-6 1/2"
	mm	19-60	25-80	46-110	60-120	90-165
Min Torque	Fl-lbs	255	580	1143	2010	4770
	Nm	346	786	1549	2725	6466
Max Torque	Fl-lbs	1710	3855	8151	13400	31800
	Nm	2318	5226	11049	18165	43108
L	Inch	7,20	9,75	12,12	14,64	NC
	mm	183	248	308	372	NC
N8	Inch	3/4"-2 9/16"	1 5/16"-3 1/8"	1 13/16"-3 7/8"	2"-4 5/8"	3 9/16"-6-1/8"
	mm	19-65	32-80	46-100	50-120	90-155
R	Inch	0,35	0,47	0,59	0,72	nc
	mm	9	12	15	18,5	NC
W1	Inch	1,25	1,65	2,08	2,48	3,26
	mm	32	42	53	63	83
W2	Inch	1,92	2,55	3,22	3,99	5,28
	mm	49	65	82	99	132
Weight with Ratchet Link	Lbs	4,5	9,7	19,5	33	78
	Kg	2	4,4	9	15	35,5



Impact Sockets

6 points

- Impact Socket 6 pt # 3/4" Classic / Long
- Impact Socket 6 pt # 1" Classic / Long
- Impact Socket 6 pt # 1 1/2" Classic / Long
- Impact Socket 6 pt # 2 1/2" Classic / Long

12 points

- Impact Socket 12 pt # 3/4" Classic / Long
- Impact Socket 12 pt # 1" Classic / Long
- Impact Socket 12 pt # 1 1/2" Classic / Long



THE UNBREAKABLE



- Step-Down Square Drive Adapters-
- Male Hex Impact Sockets-
- Insert Bits For Holders-
- Square Drive Insert Adapters-

Best Quality Made in Europe: ISO 2725-2; ISO 1174-2

Induction



Long life of bolt heaters



Time Saving in preparing and tightening



Efficient System



24/7 SERVICE ON SITE

SPECIFICATIONS

- Light and compact (600 lbs)
- Power & Source: 15kW, 380/400V
- Out performs traditional radiant heating
- Autonomous
- Easy to use
- Self-limited in temperature
- Easy to maintain (the electronic module is monobloc and interchangeable)



Bolt Heating

**New Technology
by
Thermic Elongation**

**Precise &
reproductable
tightening**



Safety and Quality



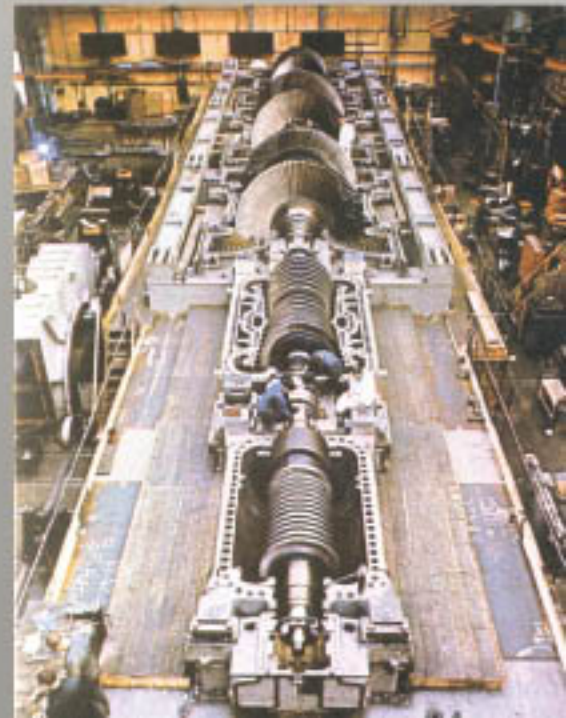
Quality of work



BENEFITS

Trials (between induction and radiant heating) performed on a M64 bolt (body length 350 mm, stretch 0,18%) have shown:

- A gain of 2/3 in heating time for both tightening and loosening. On site, the gain of time lies between 2/3 and 1/2
- A gain of 50% in cooling time. The difference of temperature for an induction and radiant heated bolt is about 90°
- A gain in time of change from one bolt to another (immediate coming out of the heater element once the required stretch obtained).
 - A few seconds are needed to change from one bolt to another, no jamming of the inductor inside the bolt
- A gain in regard to the heater element. The inductors can be easily repaired
- A simple use (only one operator per machine)
- An appreciable improvement in the safety: Both heater element and nuts stays cold (manual tightening without glove).
- A maximal safety for the tightened material: Curie point impossible to exceed.
- An autonomy of the whole machine: There is just one electric plug to run the machine (autonomous and integrated water cooling system)



Hydraulic Bolt Tensioners

**Standard Bolt tensioners available
From 7/8" to 4 1/2" stud sizes**

Special tensioners available on demand

- Standard Bolt tensioners
- Dedicated Bolt Tensioners
- Hydraulic Nuts
- Double effect Bolt tensioners
- Special Design
- High Pressure Pumps



Air & Electric Torque Wrenches

Rapid Runner technical features:

- ⇒ Accuracy +/- 5%, Repeatability 2%
- ⇒ Safe Free Gear rotation.
- ⇒ No Vibration.
- ⇒ Direct or 90° angle operation.
- ⇒ Tested & Approved for flange assembly.
- ⇒ Highest Power to Weight ratio.
- ⇒ Delivered with standard reaction arm.
- ⇒ Low Noise Operation.



MODEL	Sq. Drive	Torque Min-Max	SPEED (RPM)	WEIGHT
RR500	3/4"	60-368 Ft/Lbs	55	5.95 Lbs
RR500-A	3/4"	110-368 Ft/Lbs	250	8.81 Lbs
RR800	3/4"	118-590 Ft/Lbs	35	6.61 Lbs
RR800-A	3/4"	258-590 Ft/Lbs	160	8.81 Lbs
RR1000-X	3/4"	140-735 Ft/Lbs	30	9.5 Lbs
RR1000-XA	3/4"	330-735 Ft/Lbs	150	11.5 Lbs
RR2100	1"	258-1550 Ft/Lbs	15	11.9 Lbs
RR2100-A	1"	590-1550 Ft/Lbs	65	15.2 Lbs
RR2700	1"	405-1990 Ft/Lbs	10	12.5 Lbs
RR2700-A	1"	625-1990 Ft/Lbs	45	16.0 Lbs
RR4000	1"	590-2950 Ft/Lbs	11	20.5 Lbs
RR4000-A	1"	663-2950 Ft/Lbs	38	25.1 Lbs
RR6100	1 1/2"	885-4500 Ft/Lbs	7	28.0 Lbs



Rental Tool Box



**Hydraulic Torque Wrenches RT & RTX Series - Impact
Air wrenches - Heavy Duty Impact sockets - Slugging
wrenches - Hammers - Hydraulic pumps - Dynamometric
hand tools - Air wrenches - Air Hoses - ...**

And All specifics products and tools you need

- ✓ Certificates of calibration on every tool
- ✓ A daily control on the equipment
- ✓ Workers available on site 24/7



Rentals & Services

RENT BY DAY

RENT BY WEEK

RENT BY MONTH

RENT TO OWN

From the inception of the rental, this plan is designed around customers whose goal are to own Rapid-torc tools. We divide the cost of the tools by the total number of rental weeks to determine rental charges. There is the possibility to own a tool after a number of rental determined before.

SERVICES ON SITE, REPAIRS & CONSULTING

We Provide On-Sites Services, all brands repairs.
Whatever your needs, whenever you need contact us immediately at :

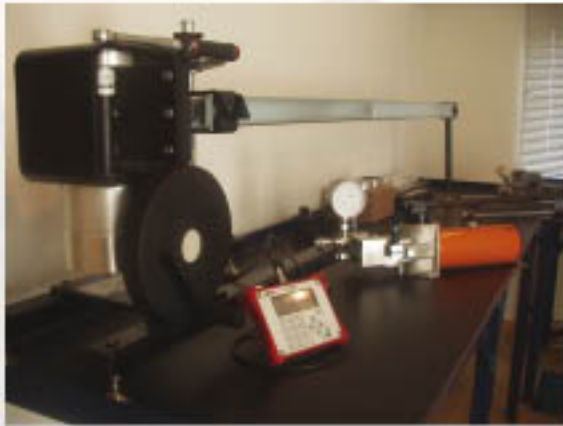
USA (+1) 281 448 59 00 EUROPE (+32) 02/ 358 19 33

www.rapidtorc.com

We accept Visa and MasterCard



Calibration



ISO 6789
"recommend a new calibration each year"

"a new calibration must be done after every repair"

*Chapter 5.5.2



Rapid-Torc has its own calibration laboratory with Norbar Transducers modules. UKAS & L.N.E. accreditation give an international traceability to every tool calibrated in our laboratory. We also do report of checking for all Brands. This is a guarantee of **ACCURACY & SAFETY**. The tools which come into our laboratory will conform to high industry standards such as:

EN 837-1-2-3; EN 562; EN 472 ; ISO 1010; ISO 6789

Accessories



RT Series Alco Arm



RTX Series Alco Arm



RT Series Sleeve



RT Series Extended Reaction arm



Gauge



Transport Case



Nipples, couplers & adapters



Hex Drive



On Side Reaction Arm

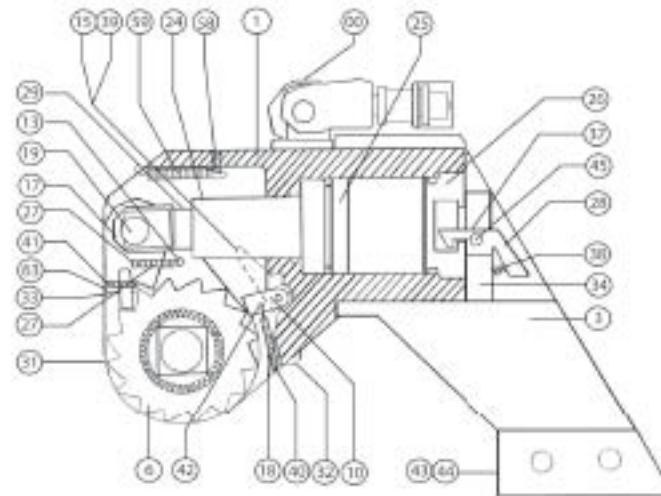


10K PSI Hydraulic Hoses

Hydraulic Twin Hoses:
Working pressure 700 Bar / 10.000 PSI -
Proof pressure 1400 bar / 20.000 PSI - Safety ratio 4:1
Serial Number, Date of Manufacturing, Rapid-Torc name
& Reference Number tagged on Hose.
Equipped standard with quick couplers Pioneer Serie 3000.
Existing in 15', 30', 45' & 60' lenght.
Delivered with CE certification.

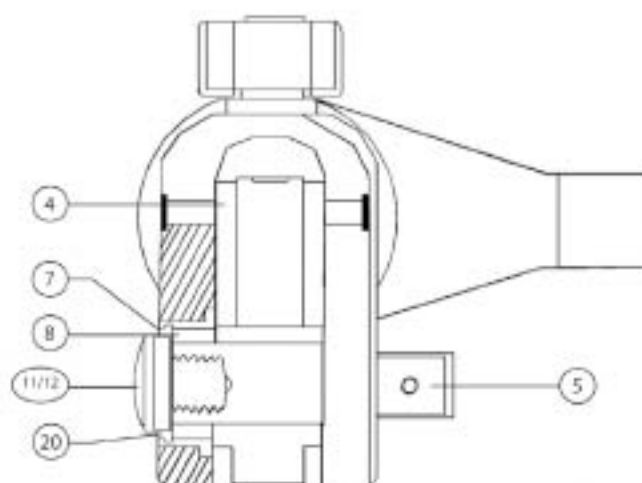


RT Series, Spare parts



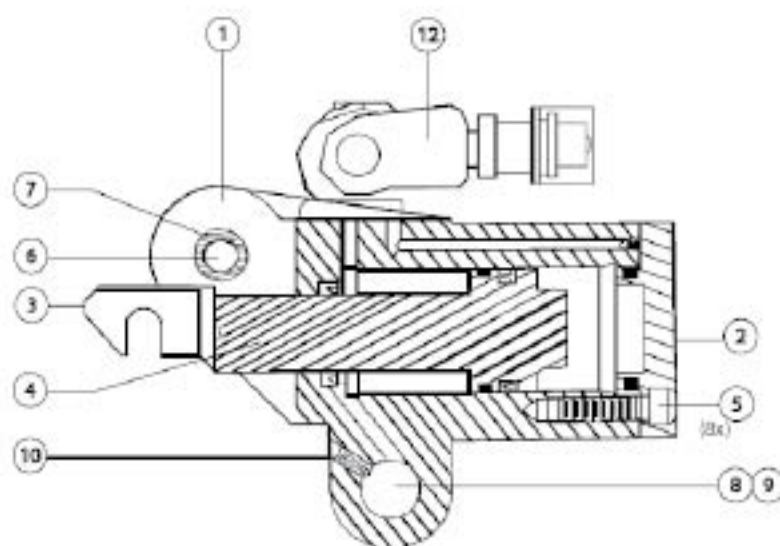
# N°	DESCRIPTION	RT1	RT3	RT5	RT8
1	Housing	RT1-1	RT3-1	RT5-1	RT8-1
3	Reaction Arm Assembly	RT1-3	RT3-3	RT5-3	RT8-3
4	Drive Plate	RT1-4	RT3-4	RT5-4	RT8-4
5	Square Drive	RT1-5	RT3-6	RT5-5	RT8-5
6	Ratchet Spline	RT1-6	RT3-6	RT5-6	RT8-6
7	Drive bushing (2)	RT1-7	RT3-7	RT5-7	RT8-8
8	Drive Sleeve Spline (2)	RT1-8	RT3-8	RT5-8	RT8-8
10	Reaction Pawl	RT1-10	RT3-10	RT5-10	RT8-10
11	Drive Retainer	RT1-11	RT3-11	RT5-11	RT8-11
13	Drive Plate Roll Pin	RT1-13	RT3-13	RT5-13	RT8-13
15	Disengagement Lever w/ screws	RT1-15	RT3-15	RT5-15	RT8-15
17	Piston Rod End	RT1-17	RT3-17	RT5-17	RT8-17
18	Reaction Pawl Spring + roll pin	RT1-18	RT3-18	RT5-18	RT8-18
19	Rod End Pin	RT1-19	RT3-19	RT5-19	RT8-19
20	Drive sleeve Retaining Ring	RT3-20	RT3-20	RT5-20	RT8-20
24	Piston Sleeve with seal	RT1-24	RT3-24	RT5-24	RT8-24
25	Piston with Seal	RT1-25	RT3-25	RT5-25	RT8-25
26	Cylinder End Cap	RT1-26	RT3-26	RT5-26	RT8-26
27	Drive Pawl Spring (2)	RT1-27	RT3-27	RT5-27	RT8-27
28	Reaction Arm Lever	RT1-28	RT3-28	RT5-28	RT8-28
29	Piston Rod	RT1-29	RT3-29	RT5-29	RT8-29
31	Shroud	RT1-31	RT3-31	RT5-31	RT8-31
32	Shroud screws (2)	RT1-32	RT3-32	RT5-32	RT8-32
33	Secondary Drive Pawl spring	RT1-33	RT3-33	RT5-33	RT8-33
34	Reaction arm Plate	RT1-34	RT3-34	RT5-34	RT8-34
37	Reaction Arm Plate Screws (2)	RT1-37	RT3-37	RT5-37	RT8-37
38	Reaction Arm Lever Spring	RT1-38	RT3-38	RT5-38	RT8-38
39	Disengagement Lever Screw	RT1-39	RT3-39	RT5-39	RT8-39
40	Primary Drive Pawl Roll Pin	RT1-40	RT3-40	RT5-40	RT8-40
41	Secondary Drive Pawl Pin	RT1-41	RT3-41	RT5-41	RT8-41
42	Reaction Pawl Roll Pin	RT1-42	RT3-42	RT5-42	RT8-42
43	Reaction Arm Boot with Pins	RT1-43	RT3-43	RT5-43	RT8-43
44	Reaction Arm Boot Pin (2)	RT1-44	RT3-44	RT5-44	RT8-44
45	Reaction Arm Lever Pin	RT1-45	RT3-45	RT5-45	RT8-45
48	Access Plug (2)	RT1-48	RT3-48	RT5-48	RT8-48
58	Shroud Spring Screw	RT1-58	RT3-58	RT5-58	RT8-58
59	Shroud Spring	RT1-59	RT3-59	RT5-59	RT8-59
61	Piston Rod Assembly	RT1-61	RT3-61	RT5-61	RT8-61
62	Housing Seal Kit	RT1-62	RT3-62	RT5-62	RT8-62
63	Drive Pawl Assembly	RT1-63	RT3-63	RT5-63	RT8-63
00	Swivel Assembly	RT1-00	RT3-00	RT5-00	RT8-00
SK	Swivel Seal Kit	RT1-SK	RT3-SK	RT5-SK	RT8-SK

RT Series, Spare parts



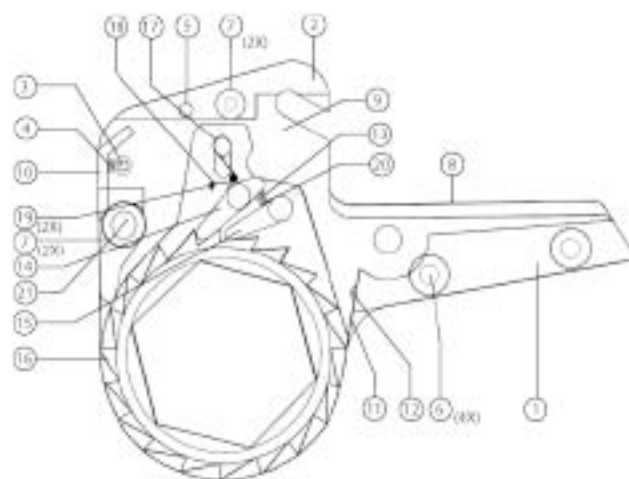
# N°	DESCRIPTION	RT10	RT20	RT25
1	Housing	RT10-1	RT20-1	RT25-1
3	Reaction Arm Assembly	RT10-3	RT20-3	RT25-3
4	Drive Plate	RT10-4	RT20-4	RT25-4
5	Square Drive	RT10-5	RT20-5	RT25-5
6	Ratchet Spline	RT10-6	RT20-6	RT25-6
7	Drive bushing (2)	RT10-7	RT20-7	RT25-7
8	Drive Sleeve Spline (2)	RT10-8	RT20-8	RT25-8
10	Reaction Pawl	RT10-10	RT20-10	RT25-10
11	Drive Retainer	RT10-11	RT20-11	RT25-11
13	Drive Plate Roll Pin	RT10-13	RT20-13	RT25-13
15	Disengagement Lever w/ screws	RT10-15	RT20-15	RT25-15
17	Piston Rod Connector	RT10-17	RT20-17	RT25-17
18	Reaction Pawl Spring	RT10-18	RT20-18	RT25-18
19	Rod End Pin	RT10-19	RT20-19	RT25-19
20	Drive sleeve Retaining Ring	RT10-20	RT20-20	RT25-20
24	Piston Sleeve with seal	RT10-24	RT20-24	RT25-24
25	Piston with Seal	RT10-25	RT20-25	RT25-25
26	Cylinder End Cap	RT10-26	RT20-26	RT25-26
27	Drive Pawl Spring (2)	RT10-27	RT20-27	RT25-27
28	Reaction Arm Lever	RT10-28	RT20-28	RT25-28
29	Piston Rod	RT10-29	RT20-29	RT25-29
31	Shroud	RT10-31	RT20-31	RT25-31
32	Shroud screws (2)	RT10-32	RT20-32	RT25-32
33	Secondary Drive Pawl spring	RT10-33	RT20-33	RT25-33
34	Reaction arm Plate	RT10-34	RT20-34	RT25-34
37	Reaction Arm Plate Screws (2)	RT10-37	RT20-37	RT25-37
38	Reaction Arm Lever Spring	RT10-38	RT20-38	RT25-38
39	Disengagement Lever Screw	RT10-39	RT20-39	RT25-39
40	Primary Drive Pawl Roll Pin	RT10-40	RT20-40	RT25-40
41	Secondary Drive Pawl Pin	RT10-41	RT20-41	RT25-41
42	Reaction Pawl Roll Pin	RT10-42	RT20-42	RT25-42
43	Reaction Arm Boot with Pins	RT10-43	RT20-43	RT25-43
44	Reaction Arm Boot Pin (2)	RT10-44	RT20-44	RT25-44
45	Reaction Arm Lever Pin	RT10-45	RT20-45	RT25-45
48	Access Plug (2)	RT10-48	RT20-48	RT25-48
58	Shroud Spring Screw	RT10-58	RT20-58	RT25-58
59	Shroud Spring	RT10-59	RT20-59	RT25-59
61	Piston Rod Assembly	RT10-61	RT20-61	RT25-61
62	Housing Seal Kit	RT10-62	RT20-62	RT25-62
63	Drive Pawl Assembly	RT10-63	RT20-63	RT25-63
00	Swivel Assembly	RT10-00	RT20-00	RT25-00
SK	Swivel Seal Kit	RT10-SK	RT20-SK	RT25-SK

RTX Series, Spare parts



# N°	DESCRIPTION	RTX-2	RTX-4	RTX-8	RTX-14	RTX-18	RTX-30
1	Housing	RTX-2-01	RTX-4-01	RTX-8-01	RTX-14-01	RTX-18-01	RTX-30-01
2	End cap	RTX-2-02	RTX-4-02	RTX-8-02	RTX-14-02	RTX-18-02	RTX-30-02
3	Rod End	RTX-2-05	RTX-4-05	RTX-8-05	RTX-14-05	RTX-18-05	RTX-30-05
4	Piston Rod Assy	RTX-2-06	RTX-4-06	RTX-8-06	RTX-14-06	RTX-18-06	RTX-30-06
5	Cylinder end cap screws	RTX-2-07	RTX-4-07	RTX-8-07	RTX-14-07	RTX-18-07	RTX-30-07
6	Fixed Upper Pin	RTX-2-08	RTX-4-08	RTX-8-08	RTX-14-08	RTX-18-08	RTX-30-08
7	Fixed Upper pin ring (2)	RTX-2-09	RTX-4-09	RTX-8-09	RTX-14-09	RTX-18-09	RTX-30-09
8	Link Pin Short	RTX-2-10	RTX-4-10	RTX-8-10	RTX-14-10	RTX-18-10	RTX-30-10
9	Link Pin Long	RTX-2-11	RTX-4-11	RTX-8-11	RTX-14-11	RTX-18-11	RTX-30-11
10	Link Pin Retainer	RTX-2-12	RTX-4-12	RTX-8-12	RTX-14-12	RTX-18-12	RTX-30-12
11	Housing Seal kit	RTX-2-13	RTX-4-13	RTX-8-13	RTX-14-13	RTX-18-13	RTX-30-13
12	Swivel Assy 180 X 360	RTX-2-62	RTX-4-62	RTX-8-62	RTX-14-62	RTX-18-62	RTX-30-62
13	Swivel seal kit	RTX-2-63	RTX-4-63	RTX-8-63	RTX-14-63	RTX-18-63	RTX-30-63

RTX Series, Spare parts



# N°	DESCRIPTION	RTX-2	RTX-4	RTX-8	RTX-14	RTX-18	RTX-30
1	Reaction Block Spacer	RTX-2-45	RTX-4-45	RTX-8-45	RTX-14-45	RTX-18-45	RTX-30-45
2	Top Spacer	RTX-2-46	RTX-4-46	RTX-8-46	RTX-14-46	RTX-18-46	RTX-30-46
3	Reaction Pawl Spring spacer	RTX-2-47	RTX-4-47	RTX-8-47	RTX-14-47	RTX-18-47	RTX-30-47
4	Reaction Pawl Spring	RTX-2-37	RTX-4-37	RTX-8-37	RTX-14-37	RTX-18-37	RTX-30-37
5	Side Plate roll Pin	RTX-2-48	RTX-4-48	RTX-8-48	RTX-14-48	RTX-18-48	RTX-30-48
6	Side plate Screw Bottom (4)	RTX-2-50	RTX-4-50	RTX-8-50	RTX-14-50	RTX-18-50	RTX-30-50
7	Side Plate Screw Top (4)	RTX-2-51	RTX-4-51	RTX-8-51	RTX-14-51	RTX-18-51	RTX-30-51
8	Side Plate (Left or Right)	RTX-2-52 #	RTX-4-54 #	RTX-8-52 #	RTX-14-52 #	RTX-18-52 #	RTX-30-52 #
9	Drive Plate (Left or Right)	RTX-2-35 #	RTX-4-35 #	RTX-8-35 #	RTX-14-35 #	RTX-18-35 #	RTX-30-35 #
10	Reaction pawl	RTX-2-36 #	RTX-4-36 #	RTX-8-36 #	RTX-14-36 #	RTX-18-36 #	RTX-30-36 #
11	Shroud	RTX-2-43 #	RTX-4-43 #	RTX-8-43 #	RTX-14-43 #	RTX-18-43 #	RTX-30-43 #
12	Shroud Screw	RTX-2-44	RTX-4-44	RTX-8-44	RTX-14-44	RTX-18-44	RTX-30-44
13	Drive Pawl Spring	RTX-2-27	RTX-4-27	RTX-8-27	RTX-14-27	RTX-18-27	RTX-30-27
14	Drive Pawl Primary	RTX-2-22	RTX-4-22	RTX-8-22	RTX-14-22	RTX-18-22	RTX-30-22
15	Drive Pawl Secondary	RTX-2-23	RTX-4-23	RTX-8-23	RTX-14-23	RTX-18-23	RTX-30-23
16	Ratchet	RTX-2-28	RTX-4-28	RTX-8-28	RTX-14-28	RTX-18-28	RTX-30-28
17	Drive Pin	RTX-2-33	RTX-4-33	RTX-8-33	RTX-14-33	RTX-18-33	RTX-30-33
18	Drive Pin Spring	RTX-2-34	RTX-4-34	RTX-8-34	RTX-14-34	RTX-18-34	RTX-30-34
19	Drive Spring Roll Pin	RTX-2-32	RTX-4-32	RTX-8-32	RTX-14-32	RTX-18-32	RTX-30-32
20	Spring Seat	RTX-2-49	RTX-4-49	RTX-8-49	RTX-14-49	RTX-18-49	RTX-30-49
21	Reaction Pawl Pin	RTX-2-99	RTX-4-99	RTX-8-99	RTX-14-99	RTX-18-99	RTX-30-99



Your local distributor:

RAPID TORC INC

705 Bradfield
Houston, TX 77060
USA

Tel: 281 448 59 00
Fax: 281 260 07 79
E-mail: sales@rapidtorc.com



WWW.RAPIDTORC.COM



RAPID TORC sa

Avenue Louise, 304 - Bte 5
B-1050 Brussels
Belgium

Tel. (+32) 02 / 358 19 33
Fax (+32) 02 / 358 50 66
E-mail: sales@rapidtorc.com