



Hydraulic Bolt Tensioner TRT

The Ultimate bolt tensioning solution for all flanges !

Made in USA from high strength AISI 4340 steel components for long lasting performance



Designed specifically for all Oil & Gas applications

- The TRT tensioners fit all standard API, ANSI B16.5 & Compact flanges.
- Special Series concepts for all B7, L7 & B16 studs bolts
- Light-weight, compact and versatile line of tensioners
- Safety First: Overpressure and Overstroke full protection.



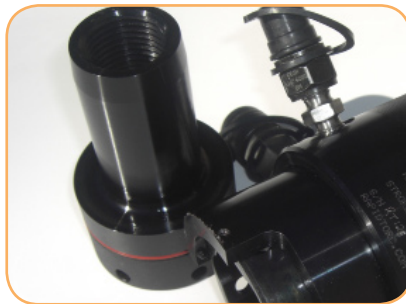
Spring Return Piston reduces operator fatigue & shrinks operation time



Operates at a maximum pressure of 21,750 psi / 1500 bar



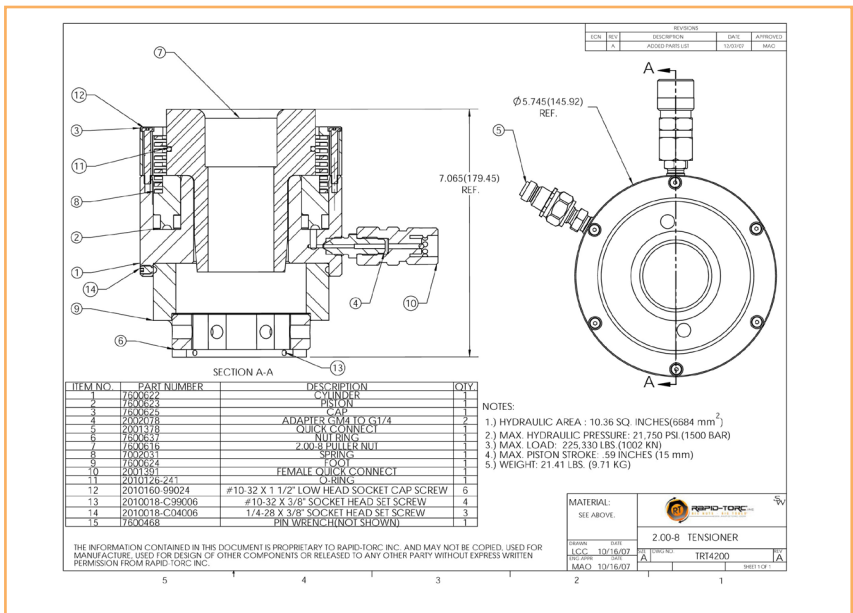
Hydraulic Bolt Tensioner TRT



Environmentally friendly:
Can be pressurized with Rapid-Torc Water Mix (ISO14000).
Visible Piston Stroke indicator for all models
Time saver: All models are able to stroke 15mm
Floating piston for small alignment compensation
Bolt coverage from 1" to 3 1/2" with just three tools
Interchangeable adapter kits available for both Metric and Imperial sizes.
Anti-slip tool surface improves operator grip and increases safety.

All exterior surface are knurled to allow for easy handling.
Larger sizes includes eye bolts for additional support.
Option: Ultrasonic measurement system available also.

Dual port design allows two time faster operation than single port tensioners.
Dual Port Design simplifies hose connection and eliminates Tee-block.

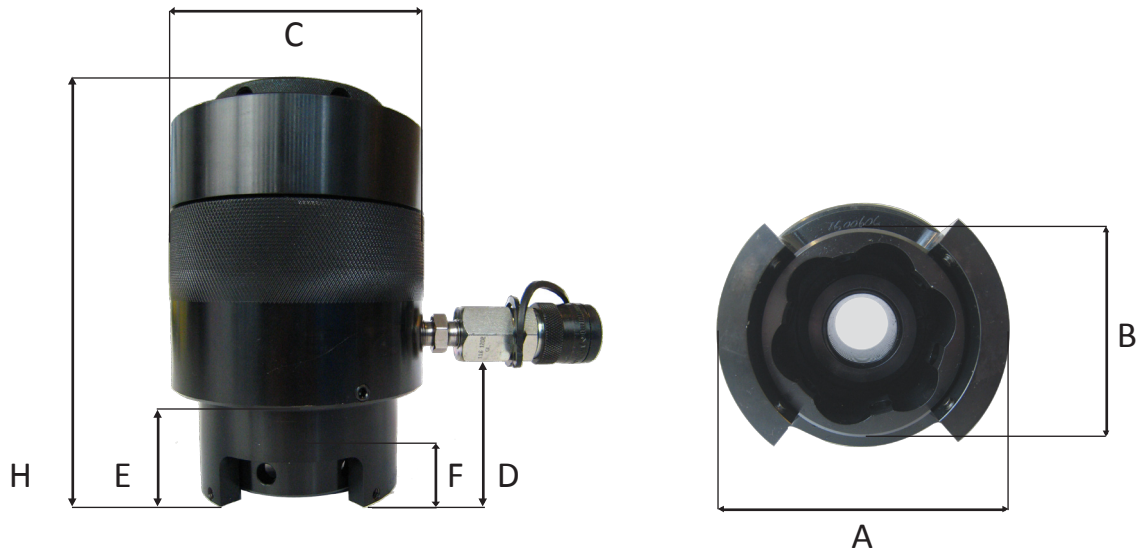


Designed with the aid of Solidworks® and Cosmos® for FEA
Socket design allows tensioners to fit all upside down applications



TRT Tensioners fit all API 6-A Flanges with B7/L7 Studs bolts

TRT series is adaptable in a minute with washers



Technical Data

Inch	A	B	C	D	E	F	H	Kn	Lbs
TRT2A	3,42	2,68	4,23	2,5	2,1	1,05	6,34	456	102,660
TRT2B	3,63	2,9	4,23	2,63	2,23	1,05	6,34	456	102,660
TRT4A	4,445	3,24	5,74	2,75	2,35	1,05	7,65	1002	225,330
TRT4B	4,995	3,96	5,74	3,08	2,68	1,25	7,65	1002	225,330
TRT6A	5,6	4,33	7,23	3,62	3,22	1,81	7,85	1515	340,605
TRT6B	6,45	5,07	7,23	3,87	3,47	1,81	7,85	1515	340,605
TRT8	NA	NA	NA	NA	NA	NA	NA	2466	552,384
TRT9	NA	NA	NA	NA	NA	NA	NA	3297	738,328

mm	A	B	C	D	E	F	H	Kn	Lbs
TRT2A	87	67	107	58	48	27	168	456	102,660
TRT2B	92	73	107	61	51	27	168	456	102,660
TRT4A	113	82	146	64	54	32	179	1002	225,330
TRT4B	126	100	146	71	61	32	179	1002	225,330
TRT6A	142	109	187	84	74	46	199	1515	340,605
TRT6B	163	128	187	89	79	46	199	1515	340,605
TRT8	NA	NA	NA	NA	NA	NA	NA	2466	552,384
TRT9	NA	NA	NA	NA	NA	NA	NA	3297	738,328